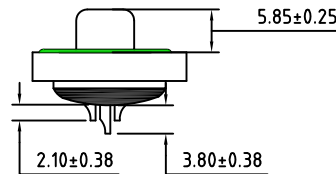
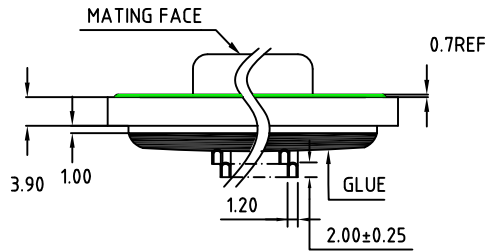
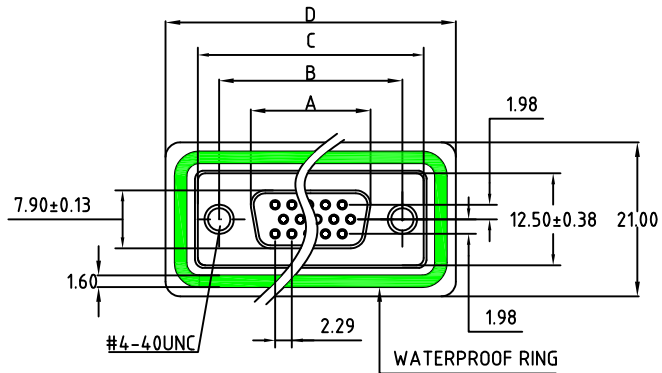


ROHS COMPLIANT

REV.	DESCRIPTION	DATE	ECN NO.
01	NEW DESIGN	2018/10/30	-



ORDERING INFORMATION:

HB 3 F XX 1 1 1 X P G X 1 A 0 0 0
 (1) (2) (3) (4) (5) (6) (7) (8) (9) (10) (11) (12) (13) (14) (15) (16)

- SERIES NO.
HB: D-SUB SOLDER TYPE
- CONTACT TYPE.
3:MAINCHED PIN+WATERPROOF
- CONNECTOR TYPE.
F:FEMALE
- NUMBER OF POSITIONS.
XX:XXPIN(SEE TABLE BELOW)
- CONNECTOR CONSTRUCTION.
1: GENERAL TYPE
- SUFFIX NO.
1: GENERAL TYPE
- BOTTOM SIDE.
1: GENERAL TYPE
- HOUSING COLOR.
X: X(OPTIONAL)
- HOUSING MATERIAL.
P:PBT+30% GLASS FILLED
- TERMINAL PLATING.
G:FULL GOLD
- THICKNESS OF TERMINAL PLATING.
X:1U~30U(OPTIONAL)
- SHELL PLATING.
1:FRONT-NICKEL PLATING;BACK-TIN PLATING,SALT-FOG:24H(OPTIONAL)
- LOCKING.
A: NONE
- SCREW.
0: NONE
- CRIMP STYLE FOR ACCESSORIES
0: THROUGH-HOLE
- OTHER.
0: NONE

No. of Contact	A ±0.25	B ±0.13	C ±0.38	D ±0.25
15	16.30	25.00	30.80	39.6
26	24.80	33.30	39.20	48.0
44	38.30	47.04	53.04	61.6
62	54.80	63.50	69.40	78.0

REMARKS:

- MATERIALS AND FINISH
SHELL : STEEL MATERIAL, FRONT SHELL NICKEL FINISHED
BACK SHELL TIN FINISHED
INSULATOR : PBT THERMOPLASTIC, 30% GLASS FILLED, UL 94V-0 RATED
CONTACT MATERIAL : BRASS
CONTACT FINISH : FULL GOLD FLASH

2. ELECTRICAL CHARACTERISTICS

- CONTACT CURRENT RATING : 5.0 AMPS
 CONTACT RESISTANCE : 30 MILLIOHMS MAX.
 DIELECTRIC WITHSTANDING VOLTAGE : 1000 V AC MIN.
 INSULATION RESISTANCE : 5000 MEGAOHMS MIN.
 TEMPERATURE RATING : -55°C ~ +105°C

DRAWN:	JEFF.ZHOU	2018.10.30
CHECKED:	KEVIN.JING	2018.10.30
APPROVED:	JINGUO.YANG	2018.10.30
	Sheet 1 of 1	Code 000
Dimensions in mm(inches)		Scale 1:1
TOLERANCE UNLESS SPECIFIED: .XX ± 0.13		Angles:±2°



TITLE:
D-SUB FEMALE,SOLDER WATERPROOF TYPE

REV. 01 Part No: HB3FXX111XPGX1A000