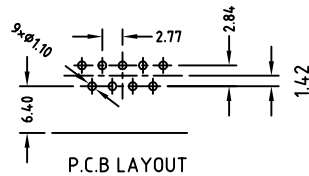
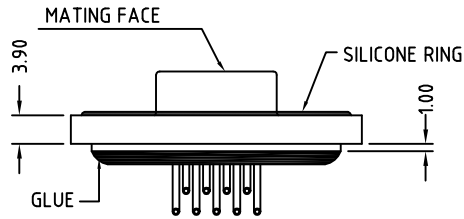
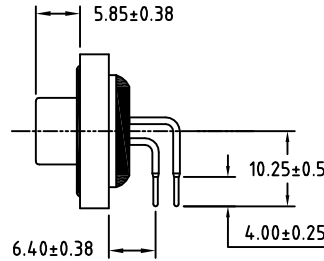
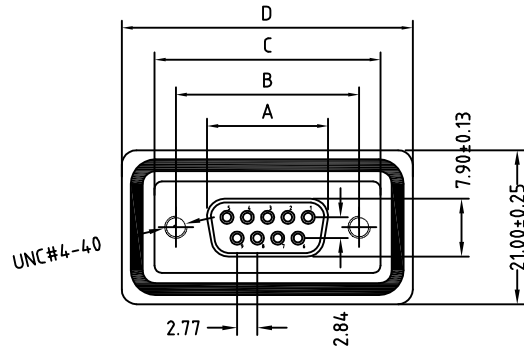


ROHS COMPLIANT

REV.	DESCRIPTION	DATE	ECN NO.
01	NEW DESIGN	2019/06/13	-



ORDERING INFORMATION:

DR 3 F XX 6 1 1 X P G X 1 A 0 Q 0  
 (1) (2) (3) (4) (5) (6) (7) (8) (9) (10) (11) (12) (13) (14) (15) (16)

- |   |  |
|---|--|
| 1.SERIES NO.<br>DR: 1.0 TERMINAL 90 MOUNT BOARD         | 9.HOUSING MATERIAL.<br>P:PBT+30% GLASS FILLED  |
| 2.CONTACT TYPE.   | 10.TERMINAL PLATING.<br>G:FULL GOLD  |
| 3.MAINCHED PIN+WATERPROOF                               | 11.THICKNESS OF TERMINAL PLATING.<br>X:1U~30U(OPTIONAL)                                |
| 3.CONNECTOR TYPE.<br>F:FEMALE                           | 12.SHELL PLATING.<br>1:FRONT-NICKEL PLATING;BACK-TIN<br>PLATING,SALT-FOG:24H(OPTIONAL) |
| 4.NUMBER OF POSITIONS.<br>XX:XXPIN                      | 13.LOCKING.<br>A:NONE  |
| 5.CONNECTOR CONSTRUCTION.<br>6.PITCH 6.4MM INSERT BOARD | 14.SCREW.<br>0:NONE  |
| 6.SUFFIX NO.<br>1:GENERAL TYPE(PITCH 2.84MM)            | 15.CRIMP STYLE FOR ACCESSORIES<br>Q:PLASTIC HOLDER+WATERPROOF RING+NUT<br>0:NONE       |
| 7.BOTTOM SIDE.<br>1:PIN LENGTH 4.0MM                    |  |
| 8.HOUSING COLOR.<br>X:OPTIONAL                          |  |

No. of Contact	A ±0.25 ±.010	B ±0.13 ±.005	C ±0.38 ±.015	D ±0.25 ±.010
09	16.30	25.00	30.80	39.60
15	24.80	33.30	39.20	48.00
25	38.30	47.04	53.04	61.60
37	54.80	63.50	69.40	78.00

REMARKS:

- 1. MATERIALS AND FINISH**  
 SHELL : STEEL MATERIAL, FRONT SHELL NICKEL FINISHED  
 BACK SHELL TIN FINISHED  
 INSULATOR : PBT THERMOPLASTIC, 30% GLASS  
 FILLED, UL 94V-0 RATED  
 CONTACT MATERIAL : BRASS  
 CONTACT FINISH : FULL GOLD FLASH  
 RIVETED INSERT : BRASS MATERIAL , NICKEL FINISHED
- 2. ELECTRICAL CHARACTERISTICS**  
 CONTACT CURRENT RATING : 5.0 AMPS  
 CONTACT RESISTANCE : 30 MILLIOHMS MAX.  
 DIELECTRIC WITHSTANDING VOLTAGE : 1000 V AC MIN.  
 INSULATION RESISTANCE : 5000 MEGAOHMS MIN.  
 TEMPERATURE RATING : -55°C ~ +105°C

DRAWN:	JEFF.ZHOU	2019.06.13	<b>深圳市正成电气有限公司</b> <b>Zhengcheng Electric Co., LTD</b>
CHECKED:	KEVIN.JIN	2019.06.13	
APPROVED:	JINGUO.YANG	2019.06.13	
	Sheet 1 of 1	Code 000	TITLE: D-SUB MOUNTING BOARD Type(FEMALE) R/A_WATERPROFF TYPE
Dimensions in mm(inches)		Scale 1:1	
TOLERANCE UNLESS SPECIFIED: .XX ± 0.13		Angles:±2°	REV. 01 Part No: DR3FXX611XPGX1A0Q0