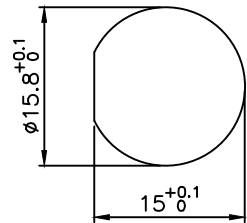
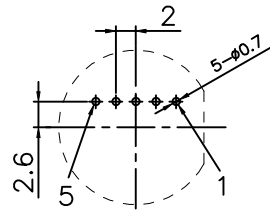


pin assignment	
Function definition	P.C.B Pin serial number
VCC	1
D-	2
D+	3
CC	4
GND	5



BOARD END HOLE OPENING SIZE



RECOMMENDED P.C.B LAYOUT

Technical specifications:		Materials:	
Mating cycles:	≥500	Contact material:	Phosphor bronze/brass
Rated current:	1.5A	Enclosure, insulating:	High performance engineering plastics
Temperature range:	-40°C~80°C	Waterproof ring:	silica gel
Waterproof grade:	IP65/IP67		
Contact resistance:	<30mΩ		
Insulation resistance:	>500MΩ		
Withstand voltage:	≧AC 1000V / 1minute		
Flame retardant grade:	UL94-V0		

4	E10 waterproof gasket $\phi 20.3 \times \phi 15.4-1$	silica gel	black	pc	1
3	E10 hex nut 5/8-27UNS	PA66	Black/blue	pc	1
2	E10 Card buckle panel back Micro Female shell	PA66	black	pc	1
1	Micro female plug+PCB board	/	gold plated	pc	1
No.	Specification	Material	Treat	Unit	Q'ty

GENERAL TOLERANCE (UNLESS SPECIFIED)	≤10	±0.1	DWN		
	<10~≤20	±0.2			CHK
	<20~≤50	±0.5			APVD
	Angle	±1°		TITLE	
 THIRD ANGLE	UNIT	REV	PART NO		
	MM	A			
	SIZE	SHEET	DRAWING NO		
	A4	1 OF 1	E10MC-BF1-F		