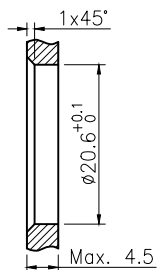
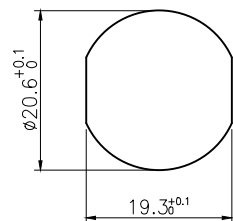



VIEW A



BOARD END HOLE OPENING SIZE

| Technical specifications: | | Materials: | |
|----------------------------------|-------------------|-------------------|--------------------|
| Coupling: | Threaded coupling | Shell material: | Brass Gold plated |
| Termination: | Soldering | Contact material: | Brass Gold plated |
| Coding: | A | Insert material: | PA66+GF UL94 black |
| Pollution degree: | 3 | Sealing: | NBR |
| Temperature range: | -40°C ~ +80°C | | |
| Degree of protection: | IP67 | | |
| Mating cycles: | ≥500 | | |
| Rated voltage: | 300V AC/DC | | |
| Rated current: | 9A | | |
| Contact resistance: | ≤3 mΩ | | |
| Insulation resistance: | ≥100 MΩ | | |
| All materials are RoHS compliant | | | |

| | | | |
|-----|---|------|------|
| 5 | 7/8 Male contact pin, brass gold plated | pc | 5 |
| 4 | Hexagon nut PG13.5, brass nickel plated | pc | 1 |
| 3 | 7/8 Waterproof O-ring $\phi 20 \times \phi 16 \times 2$, NBR black | pc | 1 |
| 2 | 7/8 Panel front mount male socket shell, brass nickel plated | pc | 1 |
| 1 | 7/8 Male Insulator(5 core), PA66+GF black | pc | 1 |
| No. | Specification | Unit | Q'ty |

| | | | |
|---|------------|-----------------|---|
| GENERAL TOLERANCE (UNLESS SPECIFIED) ≤10 ±0.1 <10~≤20 ±0.2 <20~≤50 ±0.5 Angle ±1° | DWN | DATE |  |
| | W.M | 2022.9.16 | |
| | CHK | DATE | |
| | APVD | DATE | TITLE 7/8 Male Front Mount Socket 5 core |
| THIRD ANGLE | UNIT MM | REV A | PART NO 780017-05A000000 |
| | SIZE A4 | SHEET 1 OF 1 | DRAWING NO 7/8-B-P5 |