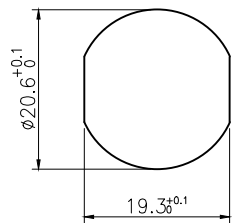
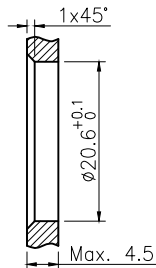


VIEW A



BOARD END HOLE OPENING SIZE



Technical specifications:		Materials:	
Coupling:	Threaded coupling	Shell material:	Brass Gold plated
Termination:	Soldering	Contact material:	Phosphor copper Gold plated
Coding:	A	Insert material:	PA66+GF UL94 black
Pollution degree:	3	Sealing:	NBR
Temperature range:	-40°C ~ +80°C		
Degree of protection:	IP67		
Mating cycles:	≥500		
Rated voltage:	300V AC/DC		
Rated current:	9A		
Contact resistance:	≤3 mΩ		
Insulation resistance:	≥100 MΩ		
All materials are RoHS compliant			

6	7/8 Female contact pin, phosphor copper gold plated	pc	5
5	Hexagon nut PG13.5, brass nickel plated	pc	1
4	7/8 Waterproof O-ring 20X16X2, NBR black	pc	1
3	7/8 Panel front mount female socket shell, brass nickel plated	pc	1
2	7/8 Female Insulator(5 core), PA66+GF black	pc	1
1	7/8 Insulator O-ring 14X10X2, NBR black	pc	1
No.	Specification	Unit	Q'ty

GENERAL TOLERANCE (UNLESS SPECIFIED)	DWN	DATE	<b>CAZN 正成</b>
	W.M	2022.9.16	
	CHK	DATE	
≤10 ±0.1 <10~≤20 ±0.2 <20~≤50 ±0.5 Angle ±1°	APVD	DATE	TITLE 7/8 Female Front Mount Socket 5 core
	UNIT	REV	PART NO
THIRD ANGLE	MM	A	780018-05A000000
	SIZE	SHEET	DRAWING NO
	A4	1 OF 1	7/8-B-S5