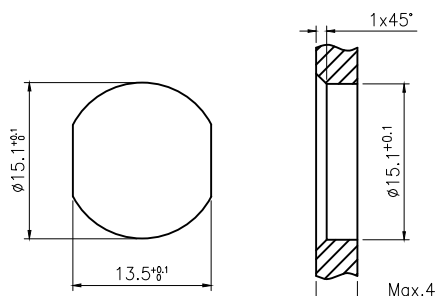
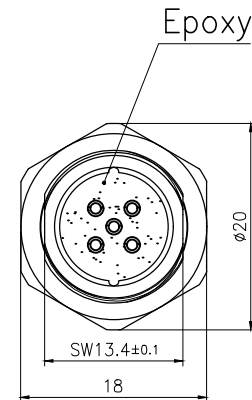
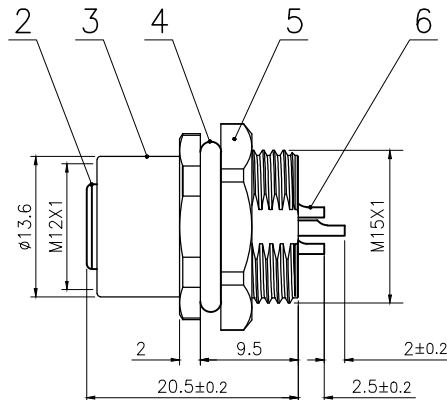



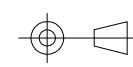
A →



BOARD END HOLE
OPENING SIZE

Technical specifications:		Materials:	
Coupling:	Threaded coupling	Shell material:	PA66+GF UL94 black
Termination:	Soldering	Contact material:	Phosphor Copper Gold plated
Coding:	A	Insert material:	PA66+GF UL94 black
Pollution degree:	3	Sealing:	NBR
Temperature range:	-40°C ~ +80°C		
Degree of protection:	IP67		
Mating cycles:	≥500		
Rated voltage:	60V AC/DC		
Rated current:	4A		
Contact resistance:	≤5 mΩ		
Insulation resistance:	≥100 MΩ		
All materials are RoHS compliant			

Rev.	Change Description	ECN #	Date

6	M12 Female contact pin	Phosphor Copper	Gold plated	pc	5
5	Hexagon nut M15×1	Nylon	/	pc	1
4	M12 Shell O ring $\phi 16 \times \phi 12 \times 2$	NBR	/	pc	1
3	M12 Panel front mount female socket shell	Nylon	/	pc	1
2	M12 Female Insulator (5 core)	Nylon	/	pc	1
1	M12 Insulator O ring $\phi 9 \times \phi 6 \times 1.5$	NBR	/	pc	1
No.	Specification	Material	Treat	Unit	Q'ty
GENERAL TOLERANCE (UNLESS SPECIFIED)	DWN DATE		TITLE	PART NO	120055-05A000000
	LL 2022.08.15				
	CHK DATE				
≤10 ±0.1	APVD DATE				
<10~≤20 ±0.2					
<20~≤50 ±0.5					
Angle ±1°					
 THIRD ANGLE	UNIT	REV	DRAWING NO		
	MM	A	M12P-B-S5		
SIZE	SHEET	DRAWING NO			
A4	1 OF 1	M12P-B-S5			