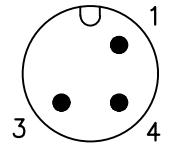
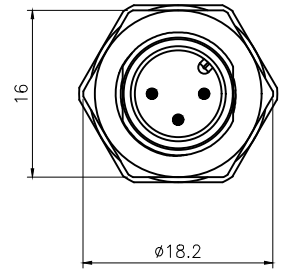


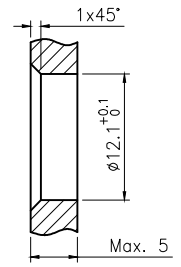
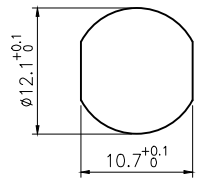
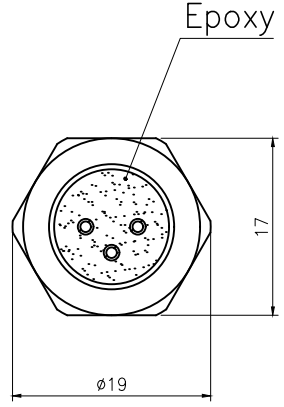
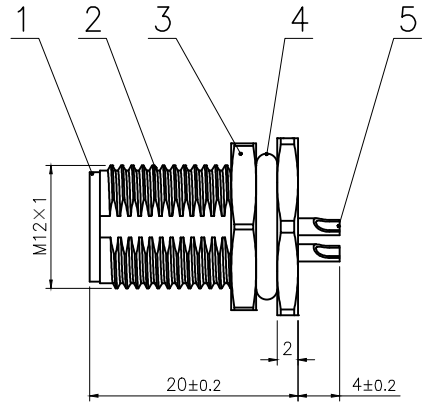
|      |                    |       |      |
|------|--------------------|-------|------|
| Rev. | Change Description | ECN # | Date |
|      |                    |       |      |



VIEW A



A →



BOARD END HOLE OPENING SIZE

| Technical specifications:        |                   | Materials:        |                                |
|----------------------------------|-------------------|-------------------|--------------------------------|
| Coupling:                        | Threaded coupling | Shell material:   | Brass/Zinc alloy nickel plated |
| Termination:                     | Soldering         | Contact material: | Brass Gold plated              |
| Coding:                          | A                 | Insert material:  | PA66+GF UL94 black             |
| Pollution degree:                | 3                 | Sealing:          | Fluro rubber,Green             |
| Temperature range:               | -40°C ~ +80°C     |                   |                                |
| Degree of protection:            | IP67              |                   |                                |
| Mating cycles:                   | ≥500              |                   |                                |
| Rated voltage:                   | 250V AC/DC        |                   |                                |
| Rated current:                   | 4A                |                   |                                |
| Contact resistance:              | ≤5 mΩ             |                   |                                |
| Insulation resistance:           | ≥100 MΩ           |                   |                                |
| All materials are RoHS compliant |                   |                   |                                |

| No. | Specification   | Unit | Q'ty |
|-----|---|------|------|
| 5   | M12 Male contact pin Gold plated OD:1.0   | pc   | 3    |
| 4   | Fluro rubber φ12*φ8*2 Green   | pc   | 1    |
| 3   | Hexagon nut Brass φ18.2*φ16-2.4 M12*1 thread, single chamfer (M12 seat nut) bright nickel | pc   | 1    |
| 2   | M12 threaded plate back male zinc alloy shell lock plate screw M12*1                      | pc   | 1    |
| 1   | M12 A code male type long Rubber core PA66 material 3 core black                          | pc   | 1    |

|                                      |      |          |                                   |
|--------------------------------------|------|----------|-----------------------------------|
| GENERAL TOLERANCE (UNLESS SPECIFIED) | DWN  | DATE     |                                   |
|                                      | W.M  | 2022.5.9 |                                   |
|                                      | CHK  | DATE     |                                   |
| ≤10 ±0.1                             | APVD | DATE     | TITLE                             |
| <10~≤20 ±0.2                         |      |          | M12 Male Back Mount Socket 3 core |
| <20~≤50 ±0.5                         |      |          |                                   |
| Angle ±1°                            |      |          |                                   |
| <br>THIRD ANGLE                      | UNIT | REV      | PART NO                           |
|                                      | MM   | A        | C110204-00890                     |
|                                      | SIZE | SHEET    | DRAWING NO                        |
|                                      | A4   | 1 OF 1   | M12-P3A-GWFM12-ZA                 |