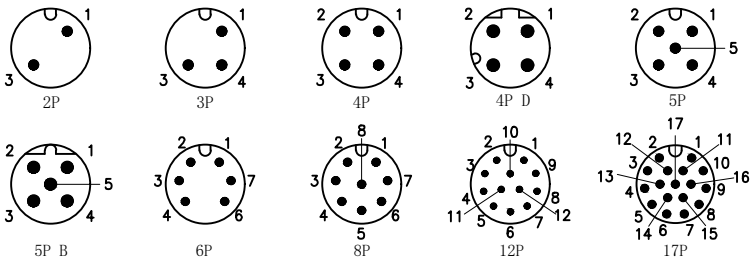
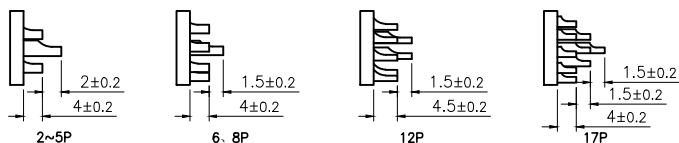


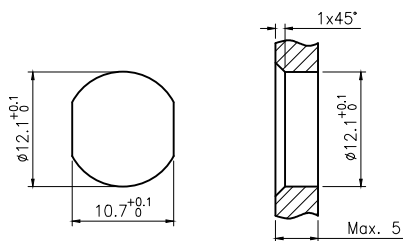
芯位排布



A: 焊杯高度

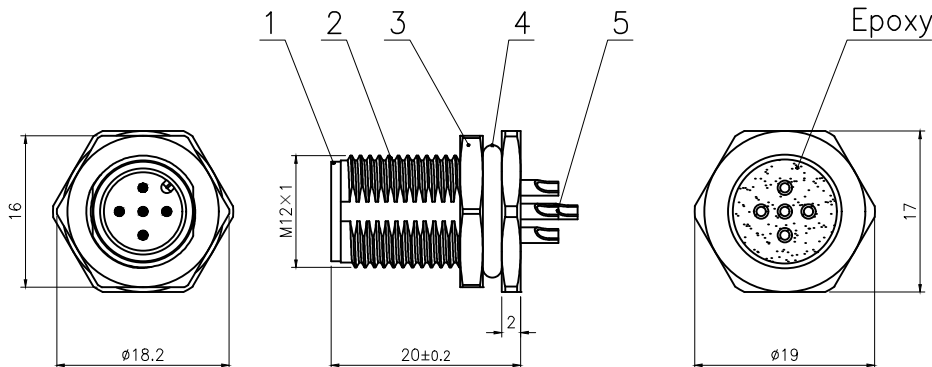


面板开孔尺寸



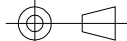
芯数

芯数	2	3	4	4D	5	5B	6	8	12	17
额定电流/电压	4A/250V	4A/250V	4A/250V	4A/250V	4A/60V	4A/60V	2A/30V	2A/30V	1.5A/30V	1.5A/30V
额定脉冲电压	2500V	2500V	2500V	2500V	1500V	1500V	800V	800V	800V	800V
绝缘电阻 (MΩ)	≥100	≥100	≥100	≥100	≥100	≥100	≥100	≥100	≥100	≥100
接触电阻 (mΩ)	≤5	≤5	≤5	≤5	≤5	≤5	≤5	≤5	≤5	≤5



B 过板插针孔径尺寸: 2~5P: $\phi 1$ mm
6~17P: $\phi 0.6$ mm

5	焊线式公针直针镀金	pc	2~17
4	氟橡胶 $\phi 12 * \phi 8 * 2$ 绿色	pc	1
3	六角螺母黄铜 $\phi 18.2 * \phi 16-2.4$ M12*1 螺纹 (M12 座子螺母) 亮镍	pc	1
2	M12 螺纹式板后, 公座铜外壳 锁板牙 M12*1	pc	1
1	M12 针型胶芯长体 黑色	pc	1
No.	Specification	Unit	Q'ty

GENERAL TOLERANCE (UNLESS SPECIFIED)	DWN	DATE
	W.M	2023.8.14
	CHK	DATE
$\leq 10 \pm 0.1$ $< 10 \sim \leq 20 \pm 0.2$ $< 20 \sim \leq 50 \pm 0.5$ Angle $\pm 1^\circ$	APVD	DATE
	UNIT	REV
	MM	A
 THIRD ANGLE	SIZE	SHEET
	A4	1 OF 1

CAZN 正成

TITLE M12 板后安装针型金属插座
焊线式 锁板牙 M12*1 锌合金外壳

PART NO

DRAWING NO M12-Px-GWFM12-ZA