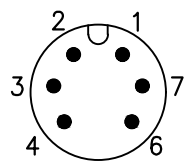
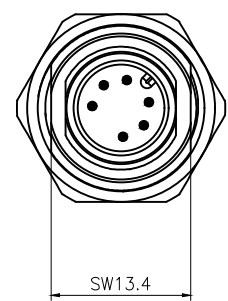


Rev.	Change Description	ECN #	Date

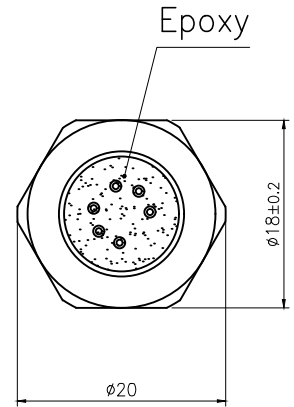
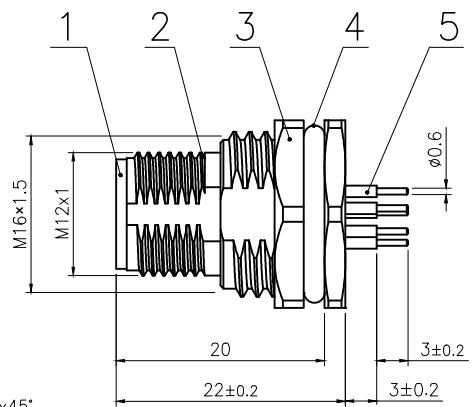


VIEW A



SW13.4

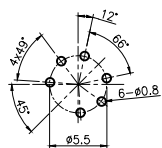
A →



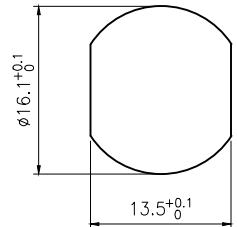
Epoxy

$\phi 18 \pm 0.2$

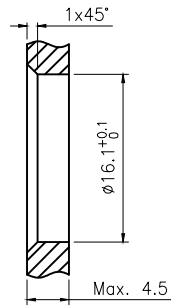
$\phi 20$



RECOMMENDED P.C.B LAYOUT



BOARD END HOLE OPENING SIZE



Technical specifications:		Materials:	
Coupling:	Threaded coupling	Shell material:	Brass/Zinc alloy nickel plated
Termination:	Dip solder	Contact material:	Brass Gold plated
Coding:	A	Insert material:	PA66+GF UL94 black
Pollution degree:	3	Sealing:	Fluoro rubber, Green
Temperature range:	-40°C ~ +80°C		
Degree of protection:	IP67		
Mating cycles:	≥500		
Rated voltage:	30V AC/DC		
Rated current:	2A		
Contact resistance:	≤5 mΩ		
Insulation resistance:	≥100 MΩ		

All materials are RoHS compliant

No.	Specification	Unit	Q'ty
5	M12 Male contact pin Gold plated OD:0.8	pc	6
4	Fluoro rubber $\phi 16 * \phi 12 * 2$ Green	pc	1
3	Hexagon nut Brass $\phi 20 * \phi 18 - 2.8$ M16*1.5 thread, single chamfer (M12 seat nut) bright nickel	pc	1
2	M12 threaded plate back male zinc alloy shell lock plate screw M16*1.5	pc	1
1	M12 A code male type long Rubber core PA66 material 6 core black	pc	1

GENERAL TOLERANCE (UNLESS SPECIFIED)	DWN	DATE	
	W.M	2023.8.14	
	CHK	DATE	
≤10 ±0.1	APVD	DATE	TITLE
<math>< 10 \sim \le 20 \pm 0.2</math>			M12 Male Back Mount Socket 6 core
<math>< 20 \sim \le 50 \pm 0.5</math>			
Angle ±1°			
 THIRD ANGLE	UNIT	REV	PART NO
	MM	A	C110204-00330
	SIZE	SHEET	DRAWING NO
	A4	1 OF 1	M12-P6A-GPFM16-ZA