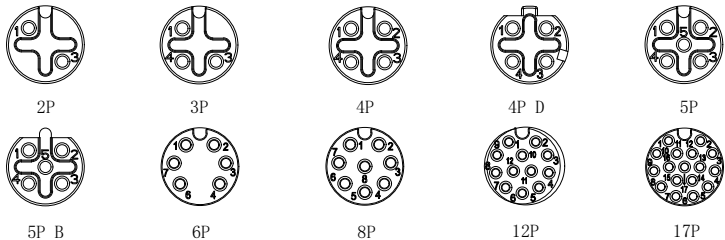
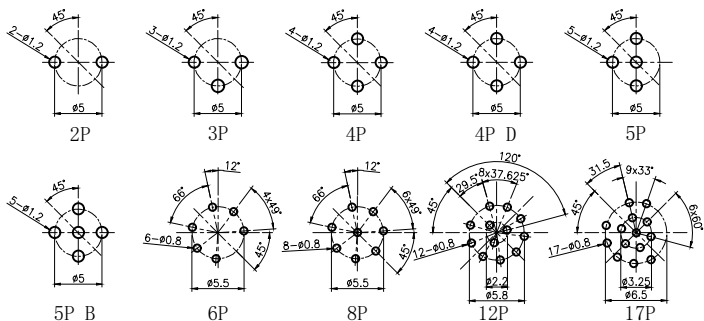


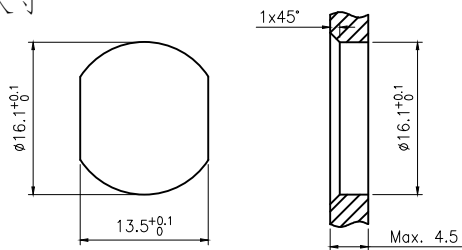
芯位排布



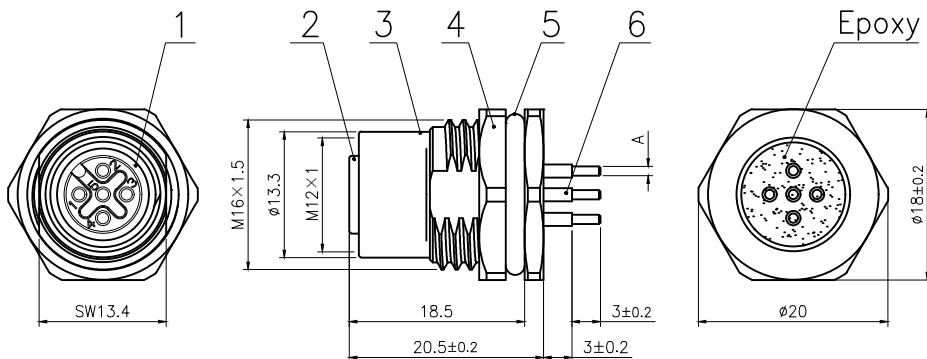
P. C. B. 开孔尺寸



面板开孔尺寸



芯数	2	3	4	4D	5	5B	6	8	12	17
额定电流/电压	4A/250V	4A/250V	4A/250V	4A/250V	4A/60V	4A/60V	2A/30V	2A/30V	1.5A/30V	1.5A/30V
额定脉冲电压	2500V	2500V	2500V	2500V	1500V	1500V	800V	800V	800V	800V
绝缘电阻 (MΩ)	≥100	≥100	≥100	≥100	≥100	≥100	≥100	≥100	≥100	≥100
接触电阻 (mΩ)	≤5	≤5	≤5	≤5	≤5	≤5	≤5	≤5	≤5	≤5



B 过板插针孔径尺寸: 2~5P:  $\phi 1\text{mm}$   
6~17P:  $\phi 0.6\text{mm}$

6	插板式母针直针镀金	pc	2~17	GENERAL TOLERANCE (UNLESS SPECIFIED) ≤10 ±0.1 <10~≤20 ±0.2 <20~≤50 ±0.5 Angle ±1°	DWN	DATE	
5	氟橡胶 $\phi 16 \times \phi 12 \times 2$ 绿色	pc	1		W.M	2023.8.14	
4	六角螺母黄铜 $\phi 20 \times \phi 18 - 2.8$ M16*1.5 螺纹, 单边倒角 (M12 座子螺母) 亮镍	pc	1		CHK	DATE	
3	M12 螺纹式板前, 母座锌合金外壳 锁板牙 M16*1.5	pc	1	APVD	DATE	TITLE	M12 板后安装孔型金属插座 插板式 锁板牙 M16*1.5 锌合金外壳
2	M12 孔型胶芯长体带倒角 黑色	pc	1	 THIRD ANGLE	UNIT	REV	PART NO
1	氟橡胶 $\phi 9 \times \phi 6 \times 1.5$ 绿色	pc	1		MM	A	DRAWING NO
No.	Specification	Unit	Q'ty		SIZE	SHEET	
					A4	1 OF 1	M12-Sx-GPFM16-ZA