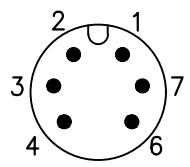
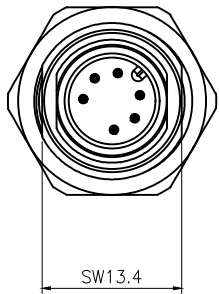


Rev.	Change Description	ECN #	Date

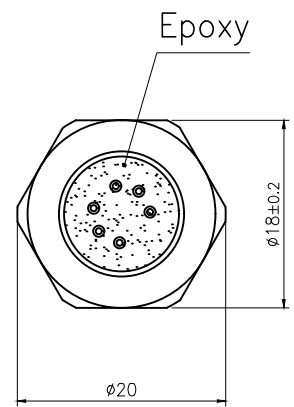
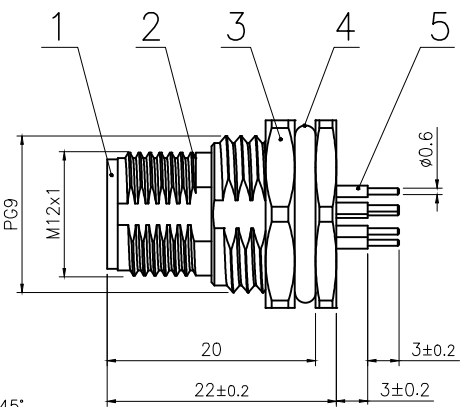


VIEW A

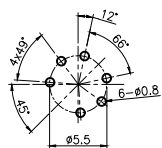


SW13.4

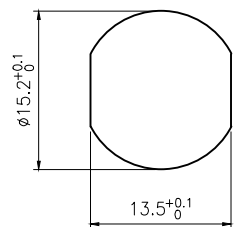
A



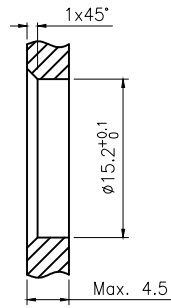
Epoxy



RECOMMENDED P.C.B LAYOUT



BOARD END HOLE OPENING SIZE



Technical specifications:		Materials:	
Coupling:	Threaded coupling	Shell material:	Brass/Zinc alloy nickel plated
Termination:	Dip solder	Contact material:	Brass Gold plated
Coding:	A	Insert material:	PA66+GF UL94 black
Pollution degree:	3	Sealing:	Fluoro rubber,Green
Temperature range:	-40°C ~ +80°C		
Degree of protection:	IP67		
Mating cycles:	≥500		
Rated voltage:	30V AC/DC		
Rated current:	2A		
Contact resistance:	≤5 mΩ		
Insulation resistance:	≥100 MΩ		

All materials are RoHS compliant

5	M12 Male contact pin Gold plated OD:0.8	pc	6
4	Fluoro rubber φ16*φ12*2 Green	pc	1
3	Hexagon nut Brass φ20*φ18-2.8 PG9 thread, single chamfer (M12 seat nut) bright nickel	pc	1
2	M12 threaded plate back male zinc alloy shell lock plate screw PG9	pc	1
1	M12 A code male type long Rubber core PA66 material 6 core black	pc	1
No.	Specification	Unit	Q'ty

GENERAL TOLERANCE (UNLESS SPECIFIED)	≤10	±0.1	DWN W.M CHK APVD	DATE	2023.8.14		
	<10~≤20	±0.2		DATE			
	<20~≤50	±0.5		DATE			
	Angle	±1°		DATE		TITLE	M12 Male Back Mount Socket 6 core
	UNIT	MM	REV	A	PART NO	C110204-00354	
	SIZE	A4	SHEET	1 OF 1	DRAWING NO	M12-P6A-GPFP9-ZA	