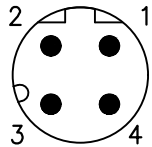
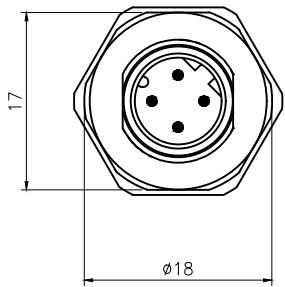


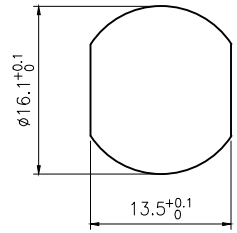
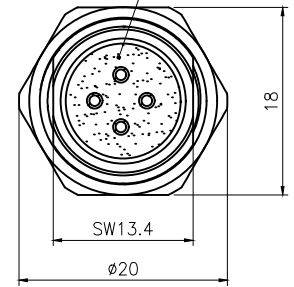
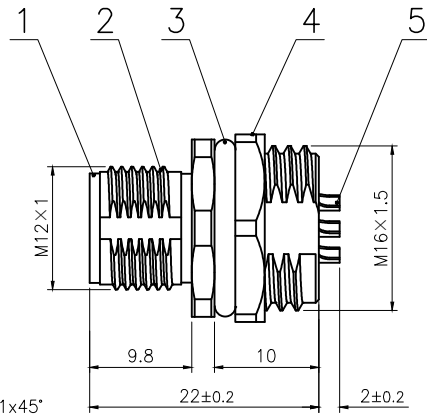
Rev.	Change Description	ECN #	Date



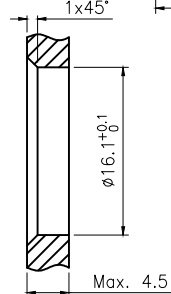
VIEW A



A →



BOARD END HOLE OPENING SIZE



Technical specifications:		Materials:	
Coupling:	Threaded coupling	Shell material:	Brass/Zinc alloy nickel plated
Termination:	Soldering	Contact material:	Brass Gold plated
Coding:	D	Insert material:	PA66+GF UL94 black
Pollution degree:	3	Sealing:	Fluoro rubber,Green
Temperature range:	-40°C ~ +80°C		
Degree of protection:	IP67		
Mating cycles:	≥500		
Rated voltage:	250V AC/DC		
Rated current:	4A		
Contact resistance:	≤5 mΩ		
Insulation resistance:	≥100 MΩ		

All materials are RoHS compliant

5	M12 Male contact pin Gold plated OD:1.0	pc	4
4	Hexagon nut Brass φ20*φ18-2.8 M16*1.5 thread, single chamfer (M12 seat nut) bright nickel	pc	1
3	Fluoro rubber φ16*φ12*2 Green	pc	1
2	M12 threaded plate front male zinc alloy shell lock plate screw M16*1.5	pc	1
1	M12 D code male type long Rubber core PA66 material 4 core black	pc	1
No.	Specification	Unit	Q'ty

GENERAL TOLERANCE (UNLESS SPECIFIED)	DWN	DATE
	W.M	2023.8.14
	CHK	DATE
≤10 ±0.1		
<10~≤20 ±0.2		
<20~≤50 ±0.5		
Angle ±1°		
 THIRD ANGLE	UNIT	REV
	MM	A
SIZE	SHEET	
A4	1 OF 1	

TITLE: M12 Male Front Mount Socket 4 core D code

PART NO: C110204-00797

DRAWING NO: M12-P4D-GWBM16-ZA