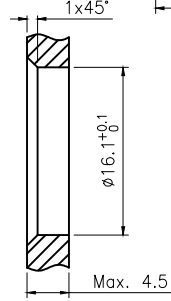
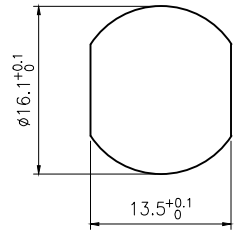
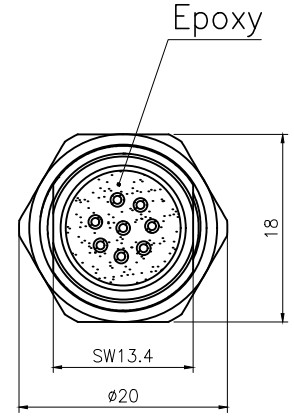
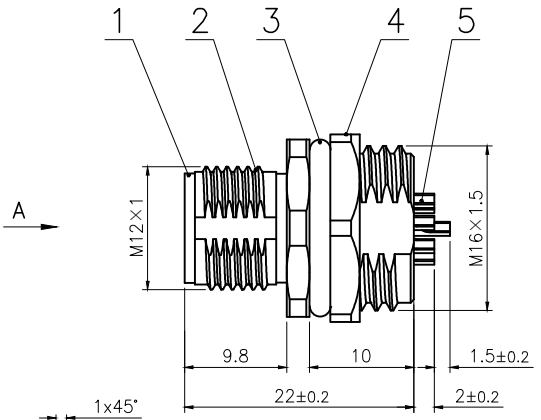
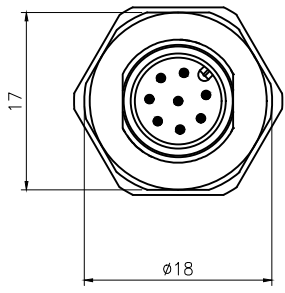
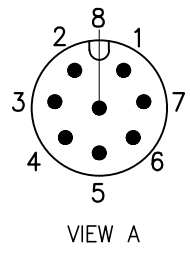




| | | | |
|------|--------------------|-------|------|
| Rev. | Change Description | ECN # | Date |
| | | | |



BOARD END HOLE OPENING SIZE

| | | | |
|-----|---|------|------|
| 5 | M12 Male contact pin Gold plated OD:0.8 | pc | 8 |
| 4 | Hexagon nut Brass φ20*φ18-2.8 M16*1.5 thread, single chamfer (M12 seat nut) bright nickel | pc | 1 |
| 3 | Fluoro rubber φ16*φ12*2 Green | pc | 1 |
| 2 | M12 threaded plate front male zinc alloy shell lock plate screw M16*1.5 | pc | 1 |
| 1 | M12 A code male type long Rubber core PA66 material 8 core black | pc | 1 |
| No. | Specification | Unit | Q'ty |

| Technical specifications: | | Materials: | |
|----------------------------------|-------------------|-------------------|--------------------------------|
| Coupling: | Threaded coupling | Shell material: | Brass/Zinc alloy nickel plated |
| Termination: | Soldering | Contact material: | Brass Gold plated |
| Coding: | A | Insert material: | PA66+GF UL94 black |
| Pollution degree: | 3 | Sealing: | Fluoro rubber,Green |
| Temperature range: | -40°C ~ +80°C | | |
| Degree of protection: | IP67 | | |
| Mating cycles: | ≥500 | | |
| Rated voltage: | 30V AC/DC | | |
| Rated current: | 2A | | |
| Contact resistance: | ≤5 mΩ | | |
| Insulation resistance: | ≥100 MΩ | | |
| All materials are RoHS compliant | | | |

| | | | |
|---|------------|-----------------|---|
| GENERAL TOLERANCE (UNLESS SPECIFIED) ≤10 ±0.1 <10~≤20 ±0.2 <20~≤50 ±0.5 Angle ±1° | DWN | DATE |  |
| | W.M | 2023.8.14 | |
| | CHK | DATE | |
| | APVD | DATE | TITLE M12 Male Front Mount Socket 8 core |
|  THIRD ANGLE | UNIT MM | REV A | PART NO C110204-00802 |
| | SIZE A4 | SHEET 1 OF 1 | DRAWING NO M12-P8A-GWBM16-ZA |