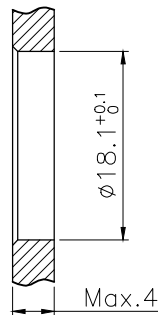
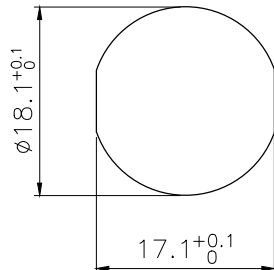
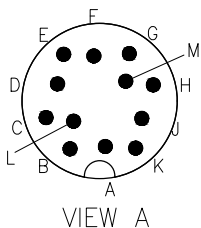


RECOMMENDED P.C.B LAYOUT

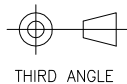


BOARD END HOLE OPENING SIZE

5	M16 Male contact pin Gold plated OD:1.0	pc	12
4	Round nut M18*0.75	pc	1
3	Nitrile rubber 17*14*1.5 black	pc	1
2	M16 Panel front mount male socket shell screw M18*0.75	pc	1
1	M16 Male Insulator 12 core black	pc	1
No.	Specification	Unit	Q'ty

Technical specifications:		Materials:	
Coupling:	Threaded coupling	Shell material:	Copper nickel plated
Termination:	Dip solder	Contact material:	Copper Gold plated
Coding:		Insert material:	PA66+GF UL94 black
Pollution degree:	3	Sealing:	NBR
Temperature range:	-40°C ~ +80°C		
Degree of protection:	IP67		
Mating cycles:	≥500		
Rated voltage:	60V AC/DC		
Rated current:	3A		
Contact resistance:	≤3 mΩ		
Insulation resistance:	≥100 MΩ		
All materials are RoHS compliant			

GENERAL TOLERANCE (UNLESS SPECIFIED)	DWN	DATE	
	W.M	2024.4.23	
	CHK	DATE	
	APVD	DATE	TITLE
			M16 Male Front Mount Socket 12 Core
	UNIT	REV	PART NO
	MM	A	C110206-00042
	SIZE	SHEET	DRAWING NO
	A4	1 OF 1	M16-P12-GPBM18



THIRD ANGLE