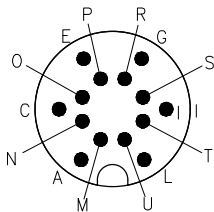
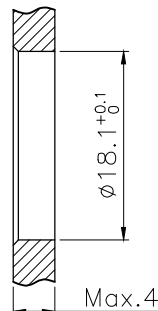
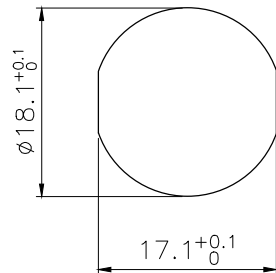


RECOMMENDED P.C.B LAYOUT



VIEW A



BOARD END HOLE OPENING SIZE

No.	Specification	Unit	Q'ty
5	M16 Male contact pin Gold plated OD:1.0	pc	14
4	Round nut M18*0.75	pc	1
3	Nitrile rubber $\phi 17 \times 14 \times 1.5$ black	pc	1
2	M16 Panel front mount male socket shell screw M18*0.75	pc	1
1	M16 Male Insulator 14 core black	pc	1

Technical specifications:		Materials:	
Coupling:	Threaded coupling	Shell material:	Copper nickel plated
Termination:	Dip solder	Contact material:	Copper Gold plated
Coding:		Insert material:	PA66+GF UL94 black
Pollution degree:	3	Sealing:	NBR
Temperature range:	-40°C ~ +80°C		
Degree of protection:	IP67		
Mating cycles:	$\geq 500$		
Rated voltage:	60V AC/DC		
Rated current:	3A		
Contact resistance:	$\leq 3$ mΩ		
Insulation resistance:	$\geq 100$ MΩ		

All materials are RoHS compliant

GENERAL TOLERANCE (UNLESS SPECIFIED)		DWN	DATE	
$\leq 10$	$\pm 0.1$	W.M	2024.4.23	
$< 10 \sim \leq 20$	$\pm 0.2$	CHK	DATE	
$< 20 \sim \leq 50$	$\pm 0.5$	APVD	DATE	TITLE
Angle	$\pm 1^\circ$			M16 Male Front Mount Socket 14 Core
	THIRD ANGLE	UNIT	REV	PART NO
		MM	A	C110206-00043
		SIZE	SHEET	DRAWING NO
		A4	1 OF 1	M16-P14-GPBM18