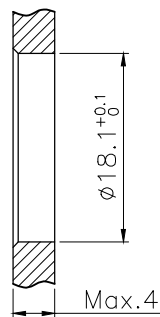
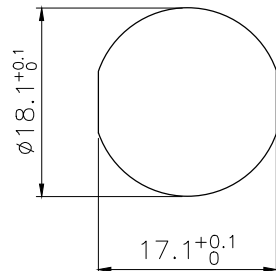
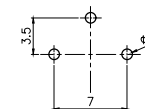


VIEW A



BOARD END HOLE  
OPENING SIZE



RECOMMENDED  
P.C.B LAYOUT

Technical specifications:		Materials:	
Coupling:	Threaded coupling	Shell material:	Copper nickel plated
Termination:	Dip solder	Contact material:	Copper Gold plated
Coding:		Insert material:	PA66+GF UL94 black
Pollution degree:	3	Sealing:	NBR
Temperature range:	-40°C ~ +80°C		
Degree of protection:	IP67		
Mating cycles:	≥500		
Rated voltage:	250V AC/DC		
Rated current:	7A		
Contact resistance:	≤5 mΩ		
Insulation resistance:	≥100 MΩ		
All materials are RoHS compliant			

5	M16 Male contact pin Gold plated OD:1.5	pc	3
4	Round nut M18*0.75	pc	1
3	Nitrile rubber 17*14*1.5 black	pc	1
2	M16 Panel front mount male socket shell screw M18*0.75	pc	1
1	M16 Male Insulator 3 core black	pc	1
No.	Specification	Unit	Q'ty

GENERAL TOLERANCE (UNLESS SPECIFIED)	DWN	DATE	<b>CAZN 正成</b>
	W.M	2024.4.23	
	≤10 ±0.1	CHK	DATE
<10~≤20 ±0.2	APVD	DATE	TITLE
<20~≤50 ±0.5	UNIT	REV	M16 Male Front Mount Socket 3 Core
Angle ±1°	MM	A	PART NO
	SIZE	SHEET	C110206-00034
THIRD ANGLE	A4	1 OF 1	DRAWING NO
			M16-P3-GPBM18