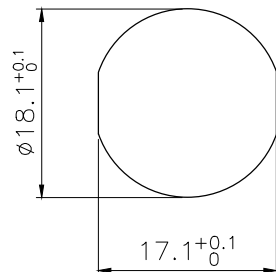
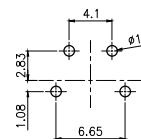
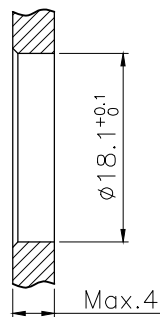


VIEW A



BOARD END HOLE
OPENING SIZE



RECOMMENDED
P.C.B LAYOUT

| Technical specifications: | | Materials: | |
|----------------------------------|-------------------|-------------------|----------------------|
| Coupling: | Threaded coupling | Shell material: | Copper nickel plated |
| Termination: | Dip solder | Contact material: | Copper Gold plated |
| Coding: | | Insert material: | PA66+GF UL94 black |
| Pollution degree: | 3 | Sealing: | NBR |
| Temperature range: | -40°C ~ +80°C | | |
| Degree of protection: | IP67 | | |
| Mating cycles: | ≥500 | | |
| Rated voltage: | 250V AC/DC | | |
| Rated current: | 6A | | |
| Contact resistance: | ≤5 mΩ | | |
| Insulation resistance: | ≥100 MΩ | | |
| All materials are RoHS compliant | | | |

| | | | |
|-----|--|------|------|
| 5 | M16 Male contact pin Gold plated OD:1.5 | pc | 4 |
| 4 | Round nut M18*0.75 | pc | 1 |
| 3 | Nitrile rubber +17*+14*1.5 black | pc | 1 |
| 2 | M16 Panel front mount male socket shell screw M18*0.75 | pc | 1 |
| 1 | M16 Male Insulator 4 core black | pc | 1 |
| No. | Specification | Unit | Q'ty |

| | | | |
|---|------------|-----------------|---|
| GENERAL TOLERANCE (UNLESS SPECIFIED) | DWN | DATE | |
| | W.M | 2024.4.23 | |
| | CHK | DATE | |
| ≤10 ±0.1 <10~≤20 ±0.2 <20~≤50 ±0.5 Angle ±1° | APVD | DATE | TITLE M16 Male Front Mount Socket 4 Core |
| THIRD ANGLE | UNIT MM | REV A | PART NO C110206-00035 |
| | SIZE A4 | SHEET 1 OF 1 | DRAWING NO M16-P4-GPBM18 |