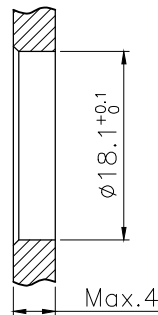
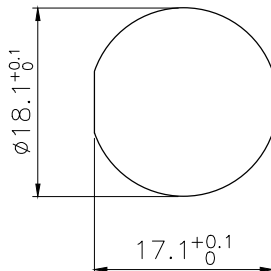
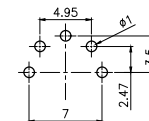


VIEW A



BOARD END HOLE OPENING SIZE



RECOMMENDED P.C.B LAYOUT

Technical specifications:		Materials:	
Coupling:	Threaded coupling	Shell material:	Copper nickel plated
Termination:	Dip solder	Contact material:	Copper Gold plated
Coding:	A	Insert material:	PA66+GF UL94 black
Pollution degree:	3	Sealing:	NBR
Temperature range:	-40°C ~ +80°C		
Degree of protection:	IP67		
Mating cycles:	≥500		
Rated voltage:	250V AC/DC		
Rated current:	6A		
Contact resistance:	≤5 mΩ		
Insulation resistance:	≥100 MΩ		
All materials are RoHS compliant			

5	M16 Male contact pin Gold plated OD:1.5	pc	5
4	Round nut M18*0.75	pc	1
3	Nitrile rubber 17*14*1.5 black	pc	1
2	M16 Panel front mount male socket shell screw M18*0.75	pc	1
1	M16 Male Insulator 5 core A code black	pc	1
No.	Specification	Unit	Q'ty

GENERAL TOLERANCE (UNLESS SPECIFIED)	DWN	DATE	
	W.M	2024.4.23	
	CHK	DATE	
≤10 ±0.1	APVD	DATE	TITLE
<10~≤20 ±0.2			M16 Male Front Mount Socket 5 Core A Code
<20~≤50 ±0.5	UNIT	REV	PART NO
Angle ±1°	MM	A	C110206-00037
	SIZE	SHEET	DRAWING NO
THIRD ANGLE	A4	1 OF 1	M16-P5-GPBM18