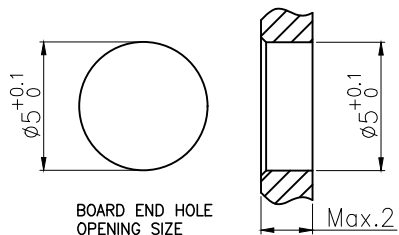
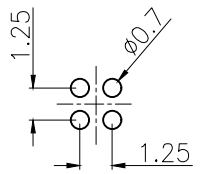


VIWE A



BOARD END HOLE OPENING SIZE

RECOMMENDED P.C.B LAYOUT

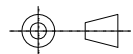



Epoxy

Revisions			
Rev.	Description	ECN No.	Date

No.	Specification	Unit	Q'ty
5	M5 Female contact pin, Phosphor copper gold plated	pc	4
4	Hexagon nut M5X0.5, brass nickel plated	pc	1
3	M5 Shell O-ring $\phi 5 \times 0.8$, NBR black	pc	1
2	M5 Panel front mount Female socket shell, brass nickel plated	pc	1
1	M5 Female Insulator(4 core), PA+GF black	pc	1

Technical specifications:		Materials:	
Coupling:	Threaded coupling	Shell material:	Brass nickel plated
Termination:	Dip solder	Contact material:	Phosphor copper Gold plated
Coding:		Insert material:	PA66+GF UL94 black
Pollution degree:	3	Sealing:	NBR
Temperature range:	-40°C ~ +85°C		
Degree of protection:	IP67 when mated		
Mating cycles:	≥500		
Rated voltage:	60V AC/DC		
Rated current:	1A		
Contact resistance:	≤5 mΩ		
Insulation resistance:	≥100 MΩ		
All materials are RoHS compliant			

GENERAL TOLERANCE (UNLESS SPECIFIED)	≤10	±0.1	 THIRD ANGLE
	<10~≤20	±0.2	
	<20~≤50	±0.5	
DWN	DATE		
W.M	2022.6.6	TITLE	
CHK	DATE	M5 Female Front Mount Socket 4 core (PCB)	
APVD	DATE	PART NO	
		050012-04A000000	
UNIT	REV	DRAWING NO	
MM	A	M5-B1-S4	
SIZE	SHEET		
A4	1 OF 1		