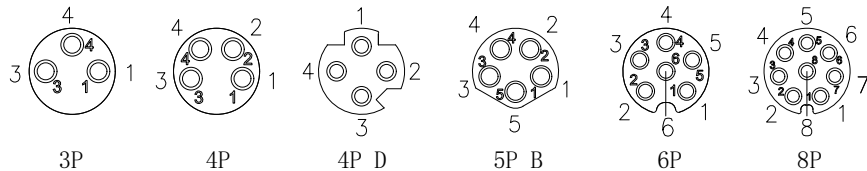


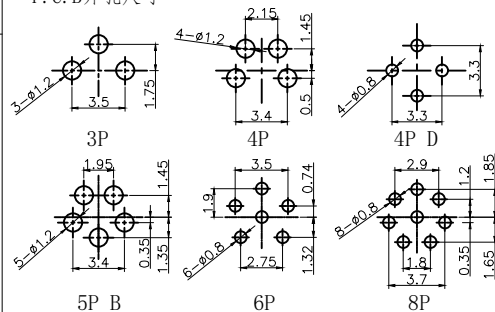
芯位排布



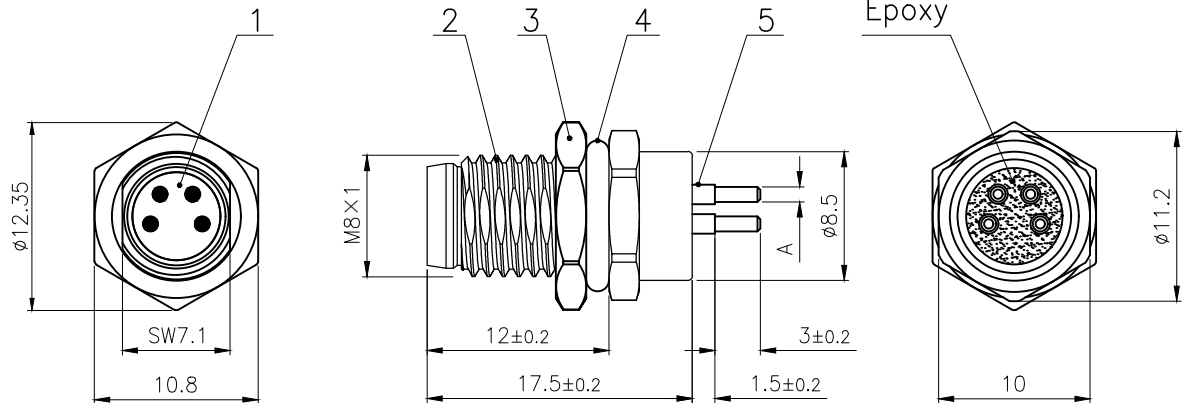
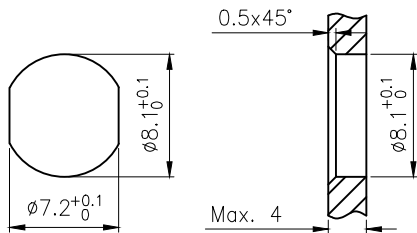
芯数

芯数	3	4	4D	5B	6	8
额定电流/电压	3A/60V	3A/60V	4A/60V	3A/30V	1.5A/30V	1.5A/30V
额定脉冲电压	800V	800V	800V	800V	800V	800V
绝缘阻抗 (MΩ)	≥100	≥100	≥100	≥100	≥100	≥100
接触阻抗 (MΩ)	≤5	≤5	≤5	≤5	≤5	≤5

P.C.B开孔尺寸



面板开孔尺寸



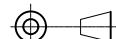
A:

3~5P: φ1mm  
6~8P: φ0.6mm  
4P D: : φ0.6mm

5	M8 插板式公针	黄铜	镀金	pc	3~8
4	壳体防水0型圈 φ9×φ6×1.5	橡胶	/	pc	1
3	锁板六角螺母 M8×1	黄铜	镀镍	pc	1
2	M8 一体式板后安装插座公头外壳	黄铜	镀镍	pc	1
1	M8 分体式公胶芯	尼龙	/	pc	1
No.	Specification	Material	Treat	Unit	Q'ty

GENERAL TOLERANCE (UNLESS SPECIFIED)

≤10 ±0.1  
<10~≤20 ±0.2  
<20~≤50 ±0.5  
Angle ±3°



THIRD ANGLE

DWN	DATE
W.M	2023.11.9
CHK	DATE
APVD	DATE
UNIT	REV
MM	A
SIZE	SHEET
A4	1 OF 1

		TITLE
		M8 一体式板后安装针型插座 PCB板式
PART NO		DRAWING NO
		M8-F1-Px-JS