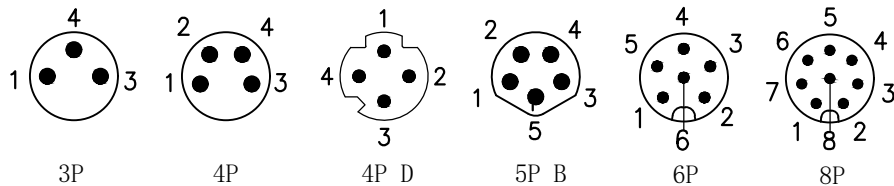


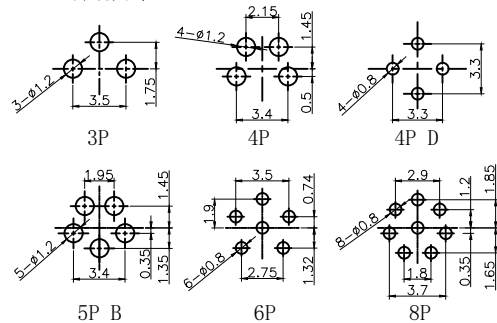
芯位排布



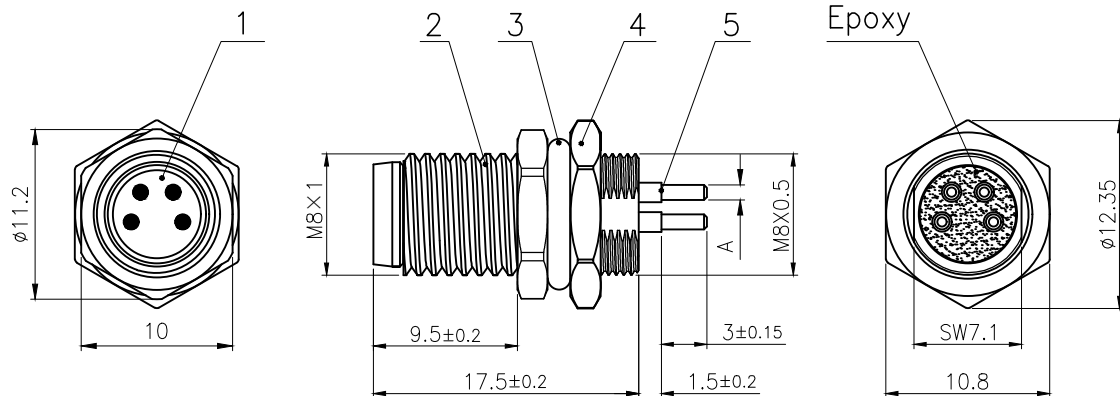
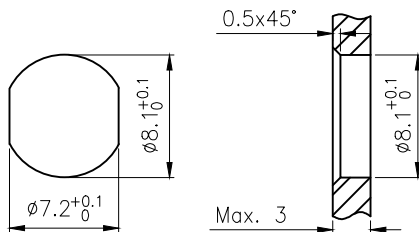
芯数

芯数	3	4	4D	5B	6	8
额定电流/电压	3A/60V	3A/60V	4A/60V	3A/30V	1.5A/30V	1.5A/30V
额定脉冲电压	800V	800V	800V	800V	800V	800V
绝缘阻抗 (MΩ)	≥100	≥100	≥100	≥100	≥100	≥100
接触阻抗 (MΩ)	≤5	≤5	≤5	≤5	≤5	≤5

P.C.B开孔尺寸



面板开孔尺寸



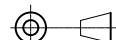
A:

- 3~5P:  $\phi 1\text{mm}$
- 6~8P:  $\phi 0.6\text{mm}$
- 4P D:  $\phi 0.6\text{mm}$

5	M8 插板式公针	黄铜	镀金	pc	3~5
4	锁板六角螺母 M8×0.5	黄铜	镀镍	pc	1
3	壳体防水0型圈 $\phi 9 \times \phi 6 \times 1.5$	橡胶	/	pc	1
2	M8 一体式板前安装插座公头外壳	黄铜	镀镍	pc	1
1	M8 分体式公胶芯	尼龙	/	pc	1
No.	Specification	Material	Treat	Unit	Q'ty

GENERAL TOLERANCE (UNLESS SPECIFIED)

≤10	±0.1
<10~≤20	±0.2
<20~≤50	±0.5
Angle	±3°



THIRD ANGLE

DWN	DATE
W.M	2023.11.9
CHK	DATE
APVD	DATE
UNIT	REV
MM	A
SIZE	SHEET
A4	1 OF 1

	TITLE
	M8 一体式板前安装针型插座 PCB板式
PART NO	
DRAWING NO	M8-B1-Px-JS