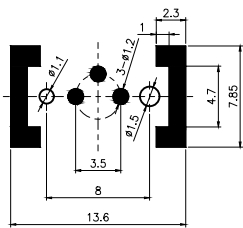
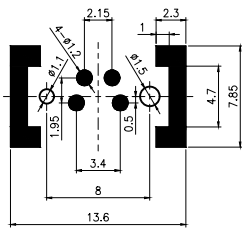


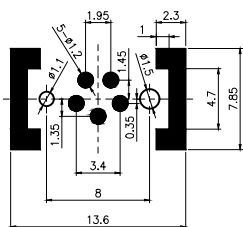
焊盘、定位孔尺寸



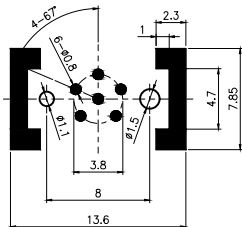
3P



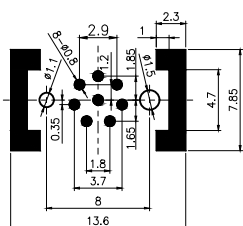
4P



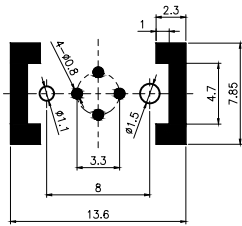
5P B



6P

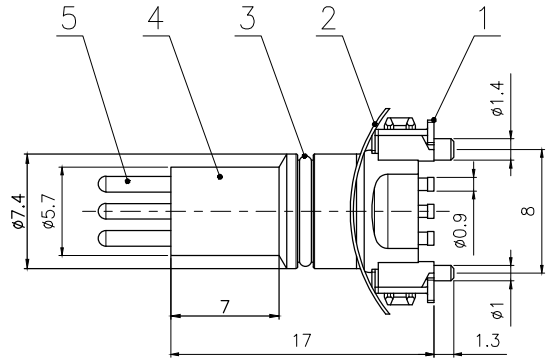
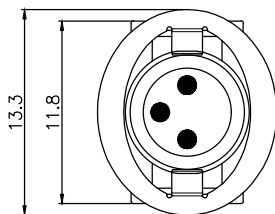


8P



4P D

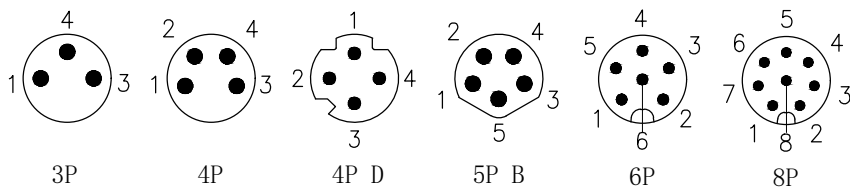
芯数	3	4	4D	5	6	8
额定电流/电压	3A/60V	3A/60V	4A/60V	3A/30V	1.5A/30V	1.5A/30V
额定脉冲电压	800V	800V	800V	800V	800V	800V
绝缘阻抗 ($M\Omega$)	≥ 100	≥ 100	≥ 100	≥ 100	≥ 100	≥ 100
接触阻抗 ($M\Omega$)	≤ 5	≤ 5	≤ 5	≤ 5	≤ 5	≤ 5



A
3P~6P: $\phi 0.9$ mm
8P: $\phi 0.7$ mm

No.	Specification	Material	Treat	Unit	Q'ty
1	胶芯屏蔽螺母	黄铜	雾锡	pc	1
2	波芯垫片	锰钢	镀锌	pc	1
3	防水O型圈 $\phi 7 \times 0.8$	氟橡胶	/	pc	1
4	M8 贴片式公胶芯	LCP	/	pc	1
5	M8 贴片式公针	黄铜	镀金	pc	3~8

芯位排布



GENERAL TOLERANCE (UNLESS SPECIFIED)	DWN	DATE	
	W.M	2024.2.21	
	CHK	DATE	
≤10 ±0.1 <10~≤20 ±0.2 <20~≤50 ±0.5 Angle ±1°	APVD	DATE	TITLE
	UNIT	REV	PART NO
	MM	A	
	SIZE	SHEET	DRAWING NO
THIRD ANGLE	A4	1 OF 1	M8-SMD-Px